

• Daimler Chrysler Airbus installs the BioTector® on-line TOC analyser and Vacuum Sampler to measure surface water at its manufacturing facility at Hamburg.

Requirement.

The successful measurement of TOC in the surface water at airports presents several challenges:

- The water levels can vary dramatically, from high in wet weather to dry in the summer months.
- The TOC analyser must be able to cope with the wide variety of chemicals used for de-icing, and also the particles found in surface water.
- The sample may have to be extracted from the underground drainage system, often several meters below the surface.
- Automatic self-diagnostics are essential due to the remote location of the analyser house.

The BioTector® Solution.

- The BioTector® Vacuum Sampler has proven reliability in providing a sample for the BioTector® TOC analyser from depths of up to 6 meters and distances of 40 meters (standard version).
- The BioTector® Vacuum Sampler has a programmable sedimentation period which can sediment out hard particulate (sand) from the sample.
- In the event of the sample being absent in dry periods, the BioTectors® optional Remote Pause can automatically place the BioTector® in stand-by mode, saving consumables, reducing maintenance and running costs. Alternatively, the BioTector® can run indefinitely with no sample present.
- The BioTector® with ARS valve will automatically select the correct range anywhere between 0-10mg and 0-25000mg with no requirement for mechanical changes, recalibration or dilution.
- The BioTector® Advanced Oxidation Method which uses Hydroxyl Radicals to oxidize the organic material in the waste water is not effected by turbidity, salt or colour. Tests have shown that completely opaque water presents no problems to the BioTector®.

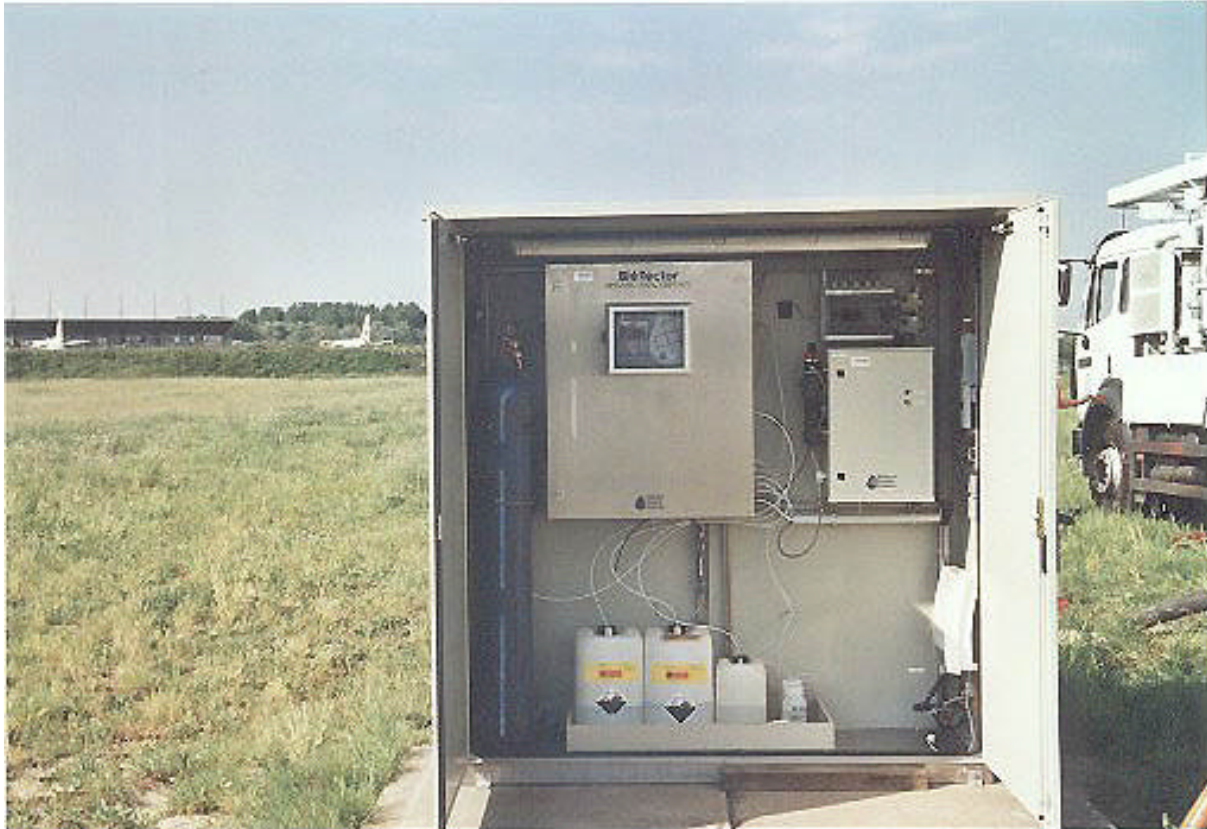
The BioTector® installed in a GRP analyser house.



Continued on next page ® ® ® ®



Details of the BioTector® 970 and Vacuum Sampler located inside the GRP analyser house.



Located in the house are:

- The BioTector® 970 and Vacuum Sampler.
- Consumables, acid, base and oxygen.
- Thermostatically controlled heater for operation in low temperatures.

Pollution Control Systems Ltd would like to acknowledge the help of Stetter KG and Daimler Chrysler Airbus in producing this information sheet.